

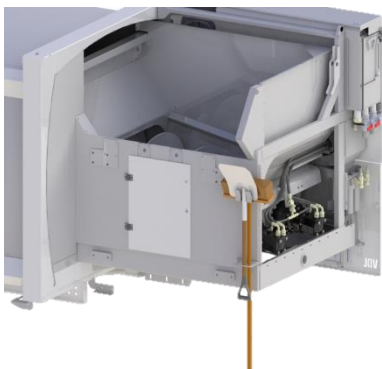
VDL Translift - Fixed System



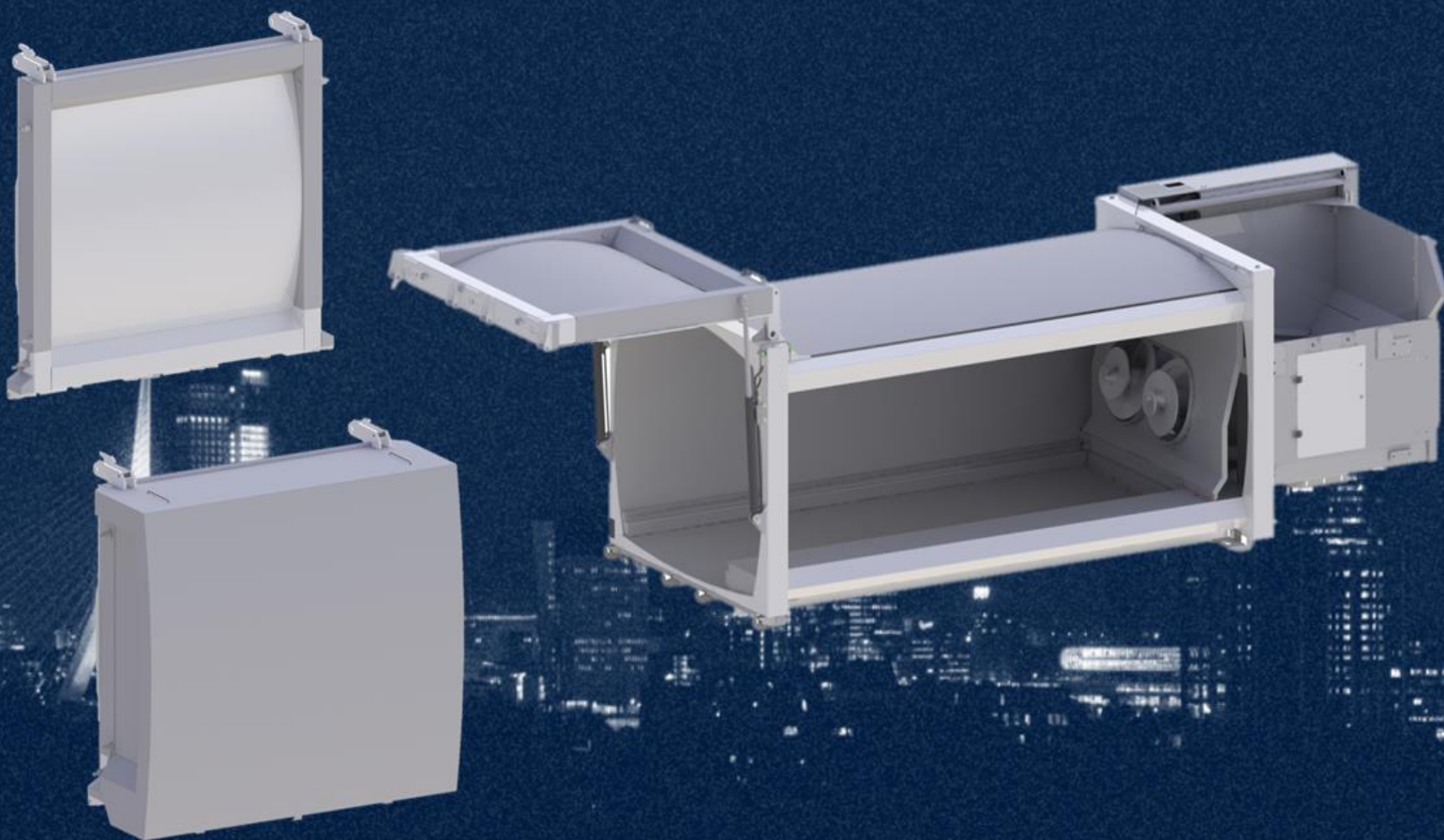
Details

Sideloader with FS system: a fixed body with ejector plate

- Suitable for all VDL Translift loading modules
- Load compartment with a capacity of 10 to 32 m³
- Easy to empty by means of a hopper with compactor unit which functions as an ejector plate
- Available with our screw compactor
- No need to tip the body which results in a stable and compact vehicle combination
- Easy to clean and maintain.



VDL Translift – Fixed System



Specifications

With its special shape the two screws can manage a wide range of waste fractions



The hopper is located on the front side of the body and can be executed with a bin catcher



Waste will be pressed into the body with the ejector plate



The FS body has a curved design which makes unloading better and cleaner

